

Te Pūmanawa

Rotorua a great place to learn ...

JUNE - DECEMBER 2016

TE PŪMANAWA : Issue #1

Nau mai, haere mai ki tēnei kohikohinga kōrero o Ngā Pūmanawa Waru ... Welcome to our first newsletter, Te Pūmanawa – *The Heart*, showcasing the benefits of what Rotorua has to offer as a great place to learn.



LEITH COMER

A WORD FROM THE CHAIRMAN

It is with a great deal of *pleasure* and *pride* that I introduce Ngā Pūmanawa e Waru's (NPEW) first newsletter.

Pleasure, because it has been heartening to work with so many enthusiastic and committed people who want to make Rotorua a **"great place to learn"** by working with schools and kura as they become future focused learning environments.

Pride, because of the enormous effort schools, the community, iwi and the NPEW team are putting into this kaupapa and the results achieved in the first six months.

I want to acknowledge the continued support of the NEXT Foundation and in particular the efforts of Ewen Anderson, the NEXT observer to the initiative, and Margaret Bendall, the "critical friend" providing advice and guidance. Their stories are featured on Pg. 2.

I also want to recognize the Trustees of the NPEW Education Trust and the principals who are on the Principals' Advisory Board. Both of these entities are providing NPEW with oversight and guidance.

The joint effort of the NPEW team and the principals, staff and learners of the twenty schools who have engaged thus far has been particularly noteworthy. We have commenced establishing collaborative practices with iwi and community groups as well as bringing together parties in providing Wi-Fi services across Rotorua.

NAME CHANGE OF TRUST

We have aligned our Trust name with Ngā Pūmanawa e Waru. The trust will no

longer be known as the EXCEL Rotorua Education Trust. It is now known as Ngā Pūmanawa e Waru Education Trust. This change is because the name 'EXCEL' often led to confusion with the EXCEL Rotorua, education initiative that is being implemented by Te Taumata o Ngāti Whakaue Iho Ake Trust.

The new name of the trust will avoid this confusion and better aligns the official name of the trust with the name given to the initiative. I hope you find this newsletter interesting and informative.

Nāku noa, nā

The whakatauākī (tribal saying) "Ngā pūmanawa e waru o Te Arawa" describes the eight children of Rangitahi, one of Te Arawa's illustrious ancestral leaders, as being the eight beating hearts of Te Arawa. It is from Rangitahi that Te Arawa tribes trace their ancestry and are brought together through a common ancestor over the wider Rotorua districts' landscape. Read more about our name inside this issue.



WHO ARE WE?

Inside this issue are some of the people committed to making **Rotorua a great place to learn**



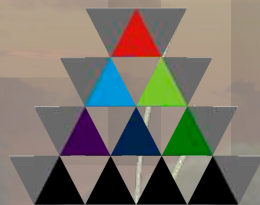
WHAT'S BEEN HAPPENING?

Inside the school gate,
Across schools &
Outside the school gate



GREAT OPPORTUNITIES

MindLab Scholarships
& keep an eye out for our
NPEW Education
Conference March 2016



**ROTORUA
engaged
excelling**
In this issue ...



Rotorua a great place to learn ...

Growing leadership in our schools will create greater opportunities to build capability in our schools and our community, Pg 8.



Tech Whizzes get to capture history

Over 30 students from our schools videoed history in the making between the NEXT Foundation and Ngā Pūmanawa e Waru Education Trust. Pg. 3

enjoy



Ngā Pūmanawa e Waru
the eight beating hearts

Advisors from the NEXT Foundation



EWEN ANDERSON

Ewen is the Investment Director at NEXT Foundation, a large philanthropic organisation dedicated to educational and environmental causes in New Zealand. Prior to joining NEXT, Ewen spent 25 years in the private sector, initially as an investment banker followed by senior management roles at major New Zealand corporates Carter Holt Harvey and Fletcher Building, before more recently spending two years as part of a startup logistics business. His career has given him exposure across a wide range of industries and geographies, not only in New Zealand but also into regions such as Australia, Asia and North America. Ewen originally hails from a Northland farming family and retains a close affinity both with the land and with the Northland community. He is the father of two young girls and now firmly part of Auckland's Grey Lynn community, where he serves on the Board of Trustees for Grey Lynn Primary School. Ewen is passionate about educational and environmental causes that provide for the betterment of New Zealand, and to that end is thrilled to be associated with Ngā Pūmanawa e Waru in Rotorua.



MARGARET BENDALL

Margaret has had a long and varied life in education. She led the design of the national English curriculum (1993) and worked on the development and implementation of the national Qualifications Framework, of which NCEA is a part, serving two terms on the Board of NZQA, before returning to work again in schools, first as DP and then as Principal of Epsom Girls Grammar School. Most recently, Margaret has been a member of the professional staff at the University of Auckland, advising school on the implementation of the New Zealand Curriculum and designing and delivering professional learning for school leaders. Margaret had a leadership role in the establishment phase of the Teach First NZ programme, an alternative pathway into secondary teaching with a focus on educational equity. She is currently a mentor in the First-Time Principals programme, an adviser and critical friend to experienced principals, Deputy Chair of the Cognition Education Trust and an education adviser to the Next Foundation. In 2005 she was made a Companion of the New Zealand Order of Merit for services to education.

Trustees of Ngā Pūmanawa e Waru Education Trust



JUDITH STANWAY

I am not an educationalist. But I am passionate that every Rotorua child should leave school being able to read, understand numbers, and be comfortable with technology. Our children need every chance they get to further their education and obtain fulfilling jobs. Allowing them to work with technology, on a day by day basis, from an early age has to be an important avenue to achieve this.

I have been a Chartered Accountant in Rotorua for 27 years. I also have four children and eight grandchildren. The Rotorua Business Community has been good to me and my family over those years and I am always keen for opportunities to give back. I have generally done that by serving on boards where I can make a difference.

In the past I have served as Chair of Lakeland Health, Deputy Chair of Te Puia, Chair of Rotorua Primary Health Organisation, a trustee on the Rotorua Lakeside Trust and a member of Rotary. When Leith Comer, who I have worked with for many years, approached me to be a trustee of Ngā Pūmanawa e Waru, I jumped at the chance to be part of this exciting project.



STEWART EDWARD

I was educated in Rotorua and attended Victoria and Otago Universities. I eventually returned home and have been a dentist in Rotorua since 1971. I am a Life Member of the NZ Dental Association and have been President of that association.

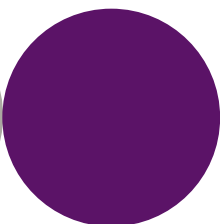
In my time in Rotorua I have had governance roles in education, health, marae administration, outdoor concerts, community funding, youth activities and prisoner rehabilitation.

From 2001 to 2010, I chaired the Lakes DHB and currently chair the QEH Community Trust, which owns the QE Health business, Chair of Mahi Tahi Akoranga Trust, Youth Projects Trust and Deputy Chair of the Lakeside Concert Trust and Deputy Chair of Ngā Pūmanawa e Waru Trust.

NGĀ PŪMANAWA E WARU CONFERENCE 2016

coming your way 31 March 2016 ...

Co-Chairs of Ngā Pūmanawa e Waru's **Principal's Advisory Board**



CHRIS GRINTER & LORRAINE TAYLOR

NPeW is working in a collaborative way with over 20 Rotorua schools in 2015/16. Their focus is around the development of eLearning plans. There is a comprehensive support team in place to assist them in the areas of community engagement, technical support, leadership and pedagogy. A research programme runs alongside all of the work, led by John Gifford in association with Helen Timperley and Lorna Earle from the University of Auckland. The generosity of the NEXT foundation has made all this possible.

The work that NPeW does in schools is endorsed by a Principal's Advisory Board (PAB), which is co-led by Chris Grinter (Rotorua Boys' High School) and Lorraine Taylor Principal (Lynmore Primary). A range of Rotorua schools are represented on the PAB.

The PAB is working actively with the NPeW organisation to achieve the established vision. This work has brought our schools together and indeed the Rotorua school community. The level of collaboration among schools is leading not only to a clearer view of learning from years 0 to 13 but also a community wide appreciation of how teaching and learning can be a 24/7 experience for our young people.

We want our young people to each have their own device, have connectivity both at school and at home so that their learning is enhanced but this ability to share and collaborate and access the Internet to enhance and support the valuable learning relationship these young people have with their teachers and schools. It is also hoped that this integration of technology in learning will enable strong whānau and family engagement in the learning process. In this way we expect achievement outcomes will improve and young people will be better prepared for their exciting futures in our rapidly changing world. This is an exciting time and our Rotorua

community has a wonderful opportunity through NPeW to create a point of difference that is the envy of other New Zealand Communities.

On behalf of the Principal's Advisory Board we would like to wish you all a very Merry Christmas and a safe New Year.



Principal's Advisory Board

Chris Grinter, Rotorua Boys' High School

Lorraine Taylor, Lynmore School

Ally Gibbons, Rotorua Girls' High School

Andrew Sinclair, Kawaha Pt School

David MacMillan, St Mary's Catholic School

Garry de Thierry, Rotorua Intermediate School

Patricia McGee, Lake Rerewhakaaitu School

Uenuku Fairhall, Te Kura o Te Koutū

Directors of Ngā Pūmanawa e Waru



MERCIA-DAWN YATES

DIRECTOR - ENGAGEMENT

mercia.yates@npew.org



SUE WINTERS

DIRECTOR - LEARNING

sue.winters@npew.org



ADAM ELLIS

DIRECTOR - TECHNOLOGY

adam.ellis@npew.org



DR VIKRAM MURTHY

TRUSTEE / DIRECTOR - LEADERSHIP

vikram@academy-collaborative-futures.ac.nz



JOHN GIFFORD

DIRECTOR - MEASUREMENT

john.gifford@npew.org

Game Changing Partnership



Representatives of the Ngā Pūmanawa e Waru Education Trust, Pukeroa Ōruawhata Holdings Ltd, Rotorua Lakes Council, Te Taumata o Ngāti Whakaue Iho Ake Trust (Excel Rotorua) & the NEXT Foundation

... brings a bright future ...

In July of this year, we announced our "game changing" partnership with the NEXT Foundation. Representatives from Rotorua's diverse community were in attendance to hear from the Trust Chairman, Leith Comer, who said "it was an opportunity for Rotorua to achieve better outcomes for all. We want to bring everyone together to share the common agenda of making Rotorua a desired, high-functioning, educational hub. This isn't just about giving students digital devices, it is about connecting the whole community to improve education for all children".

Next Foundation Chief Executive, Bill Kermode said that he was excited to announce its support. "We believe this initiative will be implementing improved models of education that can benefit all young learners." As well as providing better access for students to digital devices, the initiative aims to make Rotorua a great place to learn with an emphasis on all students engaging and excelling in their education, at school, in the community and at home.



ROTORUA
engaged
excelling

DECEMBER 2015

TE PŪMANAWA

Scholarships...



THE
MIND LAB
by Unitec

Mind Lab Scholarships help teachers step into future

DAILY POST 13 NOVEMBER 2015

The Ngā Pūmanawa e Waru Education Trust and the NEXT Foundation have joined forces to provide scholarships for 62 Rotorua teachers to up-skill and collaborate on "future-focused" learning. The scholarships were awarded to teachers interested in studying the Postgraduate Certificate in Applied Practice (Digital and Collaborative Learning) delivered by The Mind Lab.

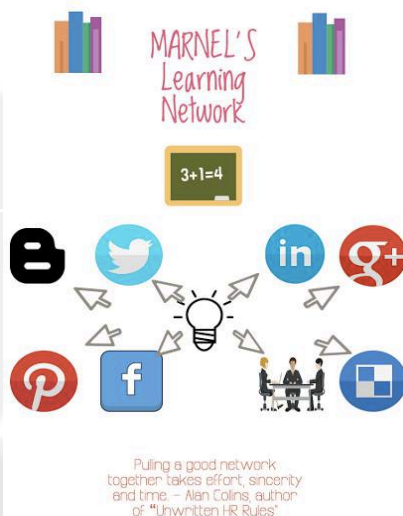
Local teacher Lynley Schofield has been appointed the

postgraduate director for the Rotorua programme. The programme has been designed to introduce new teaching methods for active class engagement, practical knowledge of digital tools and exposure to emerging practices that enhance the learning experience for today's learner.

Ngā Pūmanawa e Waru is a Rotorua-wide initiative that uses best practice e-learning teaching methods and collaboration between schools to transform educational outcomes for learners and whānau across the city's schools and kura. Teachers will complete the course in two 16-week blocks. The first block, which started last week, consists of weekly four-hour face-to-face collaborative sessions. The second set of 16 weeks will be dedicated to taking part in online work.

Ngā Pūmanawa e Waru's Director of Learning Sue Winters said the course required "huge commitment" from teachers. "I am absolutely delighted all the scholarship places were filled so easily. The generation entering primary school now has never known a world without devices and this programme allows educators to build on current effective teaching techniques and effective relationships between learners and teachers. It is not about throwing out tried-and-true teaching practices, it's about looking at how we can support our teachers in future-focused learning. There will be a lot of reading and reflection on our own practices and how we can build on our knowledge of future-focused learning to benefit our students." Mrs. Winters said teachers across primary and secondary schools were involved.

"This programme has been a wonderful springboard for our Ngā Pūmanawa e Waru teachers. After the first workshop there was a real buzz among the teachers and we received very positive feedback. "The learning these teachers are doing can be taken immediately into classrooms and when you have passionate, excited teachers, that creates a positive impact on students."



"Thanks to NPew and the NEXT Foundation, we have five staff involved in the Mind Lab Post Graduate Diploma."

JO JENKINS, Malfroy Primary School

The Journey to make Rotorua a great place to learn

This document captured the initial thinking around NPeW and has stood the test of time since 2013. It captured the common agenda that people bought into, it captured the activities that all people bought into and it led us to taking a collection impact approach to the way in which the initiative is being implemented.



Engagement:

parents family
community
BUSINESS



DIRECTOR'S VIEW

MERCIA-DAWN YATES - ENGAGEMENT

Within the **Engagement** function, we are largely responsible for engaging with and involving parents, whānau, community and iwi in the possibility of influencing schools and learners, in Rotorua. We have an energetic local team that supports this function, led out by the Director, Mercia-Dawn Yates. Together with Russell Harrison and Rodger Cunningham, who are both well-known personalities in our community, the team brings a substantial wealth of background experience to work within schools, across schools, within the community, business sectors and with iwi.

We look forward to coming to a school's community near you.

IWI ENGAGEMENT

As a build up to ensuring that all of our Te Arawa iwi are not only informed but involved in our kaupapa we have been working in the following way:



Iwi Parakuihi Power UP:

We have held three Iwi Parakuihi Power UP meetings, since August 2015, aimed at engaging and networking with iwi members and organisations who are currently involved in education. Our initial intent was to inform them about our kaupapa and then to look at ways in which we can work together, moving forward with our initiative, in the development of an Iwi Community of Practice. Over 50 attendees participated in these workshops and contributed to sharing what their respective iwi are contributing towards in our educational landscape.

He mihi maiohā tēnei ki a Annie Lingman at Annie's for hosting our meetings at her place.

Te Ohu Hiringa – Iwi Community of Practice:

The establishment of an Iwi Community of Practice, which will be called Te Ohu Hiringa o Ngā Pūmanawa e Waru o Te Arawa, will be a way of working collaboratively together to influence our schools and learners as we collectively aim to make Rotorua a great place to learn. It is encouraged that the constitution of this group, have active representatives from each of our Te Arawa iwi and hapū.



Our first meeting was held on 26 November 2015, at the GHA Centre, with representatives from Ngāti Kea-Ngāti Tuara, Ngāti Pikiao, Ngāti Rangitihi, Ngāti Rangiwehewhi, Ngāti Tarawhai, Ngāti Te Roro-o-te-Rangi, Ngāti Uenukukōpako, Ngāti Whakaue and Tūhourangi. We have established an shared online space for all members of Te Ohu Hiringa. Meetings will reconvene in the February 2016. We have also met with the following iwi and their respective members so far: Ngāti Kea-Ngāti Tuara, Ngāti Pikiao, Ngāti Tarawhai, Ngāti Whakaue and Tūhourangi Tribal Authority. We will continue to meet with iwi in 2016, as this kaupapa continues.



EXCEL Rotorua – Te Taumata o Ngāti Whakaue

Te Taumata o Ngāti Whakaue Iho Ake are no stranger to educational involvement. They provide over seven various core educational projects, including two early childhood centres and are the contract holders for EXCEL Rotorua. We are always mindful of where we have come from and are pleased to report that EXCEL Rotorua recently announced the continuation of funding for a further year, as part of the Social Sector Trial - Education Initiative. The public announcement of this, at the Rotorua Lakes Council, was well received by the audience and the Mayor of Rotorua, Steve Chadwick. NPew would like to wish Roana, Marita and the EXCEL Rotorua team all the very best for the coming year.



Te Roro-o-te-Rangi Hapū Trust ...

Te Roro o te Rangi Hapū Trust is getting behind a fantastic opportunity looking at establishing a Homework Hub with the expectation that all children at Ōwhata School will be at or above their achievements levels. The programme will be trialed this year at school, in weeks 8 & 9. Monday-Wednesday 3-5pm. If you are interested in knowing more about this please ring the Ōwhata School office and leave your name. An Ōwhata Friends of the School (ŌFOTS) or Team Horizon member will come and visit you.

School ENGAGEMENT

We are working inclusively within the NPew approach to supporting schools in the development in their eLearning plans. In order to start to integrate ways in which schools can engage an involve parents, we have included a variety of approaches to engage with schools and look at innovative ways of potentially engaging with parents, whānau and their community. Our initial work will be based around building awareness within our parent community about our kaupapa.



Parent Meetings at School

Our team has had the opportunity to present a brief introduction about our kaupapa at: Rotorua Intermediate and Ōtonga School, as we build greater awareness in our community. Rotorua Intermediate offered a voucher as a prize and Ōtonga's meeting was for all of the Kapa Haka parents. Both schools provided a warm and welcoming environment for their parents.

We have even been out to support the Ōwhata Gala, where our very own Russell sang a few songs and got the crowd going. More importantly we are still in the awareness phase of our kaupapa, and are working in as many ways as possible to build awareness of our name and the work that we are doing both inside and outside the school gates.

Our Director of Engagement has also represented NPeW at a number of competitions and prize-givings this year and would like to acknowledge all of the Learners, the Teachers, the Principals and the Board of Trustees for their commitment to guiding our young ones to become great global citizens of the world.



ROTORUA INTERMEDIATE



OTONGA PRIMARY

Habits in Homes at Western Heights Primary

We were very fortunate and felt extremely privileged to be invited to attend the Habits in Homes sessions held at Western Heights Primary School, this year. The target audience, were parents from the Western Heights Primary School's community. The parents who completed the full eight sessions implemented each of the habits in their homes and shared their feedback with the group every fortnight.



ROTORUA INTERMEDIATE



WHPS



OTONGA PRIMARY



WESTERN HEIGHTS PRIMARY – HABITS TIME

The eight habits include:

1. Be Proactive
2. Begin with the end in mind
3. Put first things first
4. Think Win/Win
5. Seek first to Understand then to be Understood
6. Synergise
7. Sharpen the Saw
8. Find your voice and help other to find theirs



ROTORUA
engaged
excelling



Ngā Pūmanawa e Waru
the eight beating hearts

DECEMBER 2015



RBHS



RIS



The Noel Leeming Mobile Learning Centre (MLC)

Noel Leeming are very keen to support NPew and as a means of showing their commitment provided our schools with their newly decked out Mercedes MLC (funded by Sir Stephen Tindall). The MLC visited over 15 schools during the week of 24 - 27 March 2015. The MLC provided our schools with the opportunity to engage with new technology and devices that enhance educational learning. We were very grateful to the two MLC Educators: Maxton Priebe & Eve Reed. We will be looking forward to providing more opportunities like this in our community in 2016. Currently Noel Leeming have an in-store Learning Centre, specifically designed to help support parents and whānau, as they start to bridge the digital divide too.



Community ENGAGEMENT

Linton Park

Russell spent a very special evening at the Linton Park Community Centre with Levi Leathers who organizes the Rotorua Community Kai for members of the community. We hope to work alongside the Linton Park Community Centre over the next year and the whānau that they provide for.



If anyone would be interested in supporting this kaupapa, I'm sure they would welcome more hands.



Rotary Presentations

Since June 2015, we have presented to all of the Rotary groups in Rotorua. Once again, not only to inform them about our kaupapa, but to look at innovative ways of engaging and involving some of these people and organisations to work with us, in our community.



NGĀ PŪMANAWA E WARU CONFERENCE 2016
be the answer ... 31 March 2016

Leadership:

ENACTMENT VIRTUES
practices leader



DIRECTOR'S VIEW

DR VIKRUM MURTHY - LEADERSHIP

When the Chair of NPew approached the Academy for Collaborative Futures (Academy) for a suite of leadership programmes to ignite fresh thought and new ideas in Rotorua's educational leadership, the brief was succinct but lucid.

"The learning had to be appreciative, collaborative, provocative, and actionable. It had to celebrate the successes that had already been achieved by people in the sector. At the same time, it had to challenge seasoned principals, deputy principals, heads of departments and emerging leadership in Rotorua's education sector to look over the ramparts of status quo and prepare for the uncertain but exciting times that are nigh."

The Academy's three programmes set out to do just. The Learning to Grow™, "Voyager™", and "Managing Change and Transition," inculcate a "futures mindset" by helping both experienced and emerging school leaders build new leadership virtues, practices and enactments that augment their repertoire.

The value of the programmes can be gauged by the fact that multiple layers of management and leadership from diverse and respected schools like Rotorua Boys High School, Rotorua Girls High School, Western Heights High School, Rotorua Intermediate School, St. Michaels School, St. Mary's School, Malfroy School, Rotokawa Primary, Ōtonga Primary, Lynmore Primary, Aorangi Primary and Ngongotahā Primary (amongst many other schools in Rotorua) are enthusiastic participants.

One of the programmes' many innovative features is the willing involvement of long-standing Rotorua educational leaders like Nicky Brell, Garry de Thierry, Cathryn Naera, Debra Harrod, Briar Stewart, Shelly Fitness, Lorraine Taylor and Linda Woon, in mentoring rising stars as they seek to master collaborative inquiry and harness collective wisdom to meet zeitgeist challenges.

No stronger testimonial exists for the efficacy of any programme than words that emanate from participants' hearts and so it is with the Academy's work. To share but one of many such observations from a Rotorua school leader, "The learnings have been great - filled with promise - living in a transformative world will be possible because of the work you do."



INAUGURAL PRINCIPALS FROM "LEARNING TO GROW" WITH SPECIAL GUEST CLIFF CURTIS

More leadership courses will be made available
to our schools in 2016 ... Watch this space ...



the facilitators

DIRECTOR'S VIEW

SUE WINTERS - LEARNING

Sue Winters leads out a highly capable **Learning Team** who are actively involved with facilitating the development of eLearning Plans in NPeW schools. Her team consists of teachers from our community, Hancine Samvelyan, Wendy Stafford and Marnel van der Spuy. All four will be available to facilitate teacher professional learning.

"The process of working with the team has built a foundation for ako (reciprocity) to happen."

TUI McCAULL, RGHS

The NPeW Team, consisting of Learning, Engagement, Measurement and Technology, has been working alongside eLearning leadership teams in schools to develop eLearning Plans to set goals and targets and monitor the 3 key questions:

- What has been the shift in our school, to a future focused learning pedagogy and teacher practice?
- What has been the shift in internet connectivity at school and home for our learners and teachers?
- What has been the shift in parent and whānau engagement in their children's learning?



Co-constructing eLearning Plans

Schools' eLearning Leadership Teams are led by Principals and include BOT members, parents and whānau, teachers, technicians and learners. A huge "thank you" from NPeW must go out to all of these people for their time and commitment to this planning and development. They attend 3 X 2 hour planning sessions with us. Thanks very much to principals and senior staff for the "continuous communications" which are enabling these sessions to be planned and to happen.



Future Focused Learning and Teaching:

The NPeW Learning Team are enjoying dialogue with Rotorua educators about "What does future focused learning look like?" A Review of Literature suggests that:

Future focused learners are:

- Interested and engaged in their learning
- Agentic (actively involved in decision-making about their own learning)
- Connected
- Able to learn anytime, anywhere

Future focused teachers are:

- Knowledgeable about the NZ Curriculum or Te Marautanga o Aotearoa
- Equipped to seek and use "student voice" to inform their teaching
- Experienced as lifelong learners
- Digital learners
- Evaluative and adaptable

"NPeW has supported our staff with their expertise in planning our strategic direction in 2016, after interviewing our students"

JO JENKINS, Malfroy Primary School

"I have been working with the NPeW Learning Team on our Yr 9 Future Focused class for 2016. The team have been absolutely invaluable in our planning stages."

TUI McCAULL, RGHS

"NPeW has supported our staff with their expertise in planning our strategic direction in 2016, after interviewing our students"

JO JENKINS, Malfroy Primary School

"We are excited about the collaboration that will occur between schools to transform our educational outcomes for our learners and whānau."

JO JENKINS, Malfroy Primary School

"We are also looking forward to getting connectivity into our community under the guidance of the NPeW staff"

JO JENKINS, Malfroy Primary School

Professional Learning & Development
PLD

WOULD YOU LIKE TO HAVE ONE OF THESE KITS IN YOUR SCHOOL?

This opportunity is made available to schools during the implementation phase of the NPeW eLearning Plan.

Guided by the goals and learning intentions of the eLearning plan, schools may choose to implement a three week 1:1 device trial with ongoing support both in and out of the classroom by a Ngā Pūmanawa e Waru eLearning Specialist and Technology Expert.

1:1 Device Learning Experience

Engaging students and teachers through future-focused pedagogy and competencies.

Apple iPad Mini (x30) Apple iPad Air (x20) Samsung Tablet (x30)



CONTACT:

If you would like to know more about the 1:1 kits and the PLD available, please contact **Wendy Stafford** - wendy.stafford@npew.org



1:1 LEARNING EXPERIENCE

Measurement:

inenga **data** **MĒHUA**
e v a l u a t i v e
THINKING *evidence* **ME**



Working with the University of Auckland

The university team is widely published on the topic of evaluative thinking and have recently completed research for an OECD Working Paper. We are greatly privileged to have this group of experts working with us and contributing to Rotorua's future education environment.

Evaluative thinking is a systematic process of learning for change. It involves pausing at different points in an innovation to reflect on progress and direction and decide whether and what evidence is needed to inform ongoing decisions. It ensures that decisions are evidence-based activities are ultimately targeted towards our overall goal of improved, valued outcomes for all Rotorua learners. These decisions may lead to amendments, refinements or further developments of the innovation.

"It will guide us in the re-framing of our school vision statement. It has provided us with valuable information around the access to technology within our communities homes."

GRAEME TAYLOR, Principal - Broadlands School

DIRECTOR'S VIEW

JOHN GIFFORD - MEASUREMENT

The **Measurement** team is led by John Gifford and Hinemoa Anaru.

Measurement and evaluation are important parts of the NPeW initiative and to embed this process into all of our activities, we have established a partnership with Auckland University - Faculty of Education. This partnership is focused on building evaluative thinking capabilities within the NPeW team. Assisting us to better understand and to firmly embed evaluative thinking within the NPeW team, Professor Helen Timperley, Lorna Earl and Lisa Dyson from the university are working with NPeW to:

- Develop a theory of action,
- Construct evaluative questions that link learning, technology, and engagement,
- Assist with the development of data collection approaches,
- Identify ways to analyse data and present it so that learnings can be identified and shared,
- Guide NPeW on the collection of "baseline" data and information for the development of eLearning plans for schools.



"We go to Safari and search up the picture that we want, then we go to images and we photo shoot it and then go to pic collage. Click on the picture and copy into your document."

YEAR 3 STUDENT

Collecting valuable student voice ...



NGĀ PŪMANAWA E WARU CONFERENCE 2016

coming your way 31 March 2016 ...



Collecting Student Voice

For most of Term 4 members of NPew and school teams have interviewed 400 students from 16 schools (primary, intermediate and secondary), to identify the current state of digital knowledge and competence. School teams, with the support of Measurement facilitators have moderated the results for the school's data report. This data, which is baseline evidence, will support school teams to identify key learning goals and achievement targets as they construct eLearning plans for 2016.

Student Voice on: creating documents

"You go on google drive and then you press new, then you go to the bottom and press more and go into google drawings. You have to try and upload it into your doc. We put videos on our blogs though"

YEAR 3 STUDENT

Student Voice on: support for learning at home

"They always come to my student-led conferences and they always help with my homework, but they don't give me the answer"

YEAR 6 STUDENT

Student Voice on: checking websites for accuracy of information

"I check out a variety of sources to confirm that what I've got is right. If it's the same information in multiple sources - I assume it's correct"

YEAR 9 STUDENT

"By collecting student voice it shows that we value what our learners think and say and it conveys that they are a part of their own learning journey."

LIZ MACASKILL, DP Broadlands School

"It shows areas that we need to address and improve upon such as digital citizenship throughout the school."

MARNEL VAN DER SPUY, AP Broadlands School





DIRECTOR'S VIEW

ADAM ELLIS - TECHNOLOGY

The **Technology** team has been hard at work running a number of different areas that contribute to the scale of this project. The Tech team is led by Adam Ellis, who has a competent team of tech angels; Cintina Miki, Sherry Tait and Kath Cross. As a team we are determined to see every child that has a NPew device, be able to connect anywhere, anytime. With that vision in mind we are currently working with a number of schools and iwi organisations to build a connectivity model that is world first, not only in its thinking but in its deployment.

MOBILE DEVICE MANAGEMENT (MDM)

NPew has been working with Lightspeed of Austin, Texas to refine the capabilities of the platform. Mobile device management will allow the deployment and management of your schools devices to work seamlessly across the internet. The MDM will allow you to install apps across 1000's of devices without the need to even touch them. What's more is when the school and community use Lightspeed MDM, NPew will be able to add extra features into the device at any time. For example when Matata gets a WiFi system, all Lightspeed/NPew devices will be able to use this service without any need to enter usernames and passwords. The device will configure itself to talk to the internet automatically. All that is left to do is to click on your favourite internet browser and surf the web.

The tech team recently attended the "Made Awards" in Mt Maunganui sponsored by Noel Leeming to seek the best efforts of entrants with fantastic ICT equipment, which will further enhance the place of ICT in the learning world. All schools that participated showcased a high level of skill. Our very own Kaitao Middle School were awarded the highest creativity award alongside other awards thanks to a music video they created. Well done to our Rotorua schools who competed!



ROTORUA
engaged
excelling

TRAINING

The Technology team recently completed a three day training in Hamilton and Auckland up-skilling on Google Apps for Education (Google Classrooms, Google Admin) and Office 365. This training has enhanced our ability to work in a collaborative space, support Google Chromebook and Windows ecosystem's. It also gave us a deeper understanding of how these platforms are configured in the backend.

The team is working along side a majority of our 2015 schools to work out the current state of networks in schools. We are finding commonalities across a number of our schools where connectivity is an issue especially when connecting using a lot of devices at the same time. The team will continue to work these issues to make your networks easy and simple yet robust and able to support more devices. There are many issues that can slow a network down and one thing we are finding is a number of services your school servers are doing are being duplicated. In cyber space whenever a job is being done twice, speed becomes an issue. We will simplify your networks and work with you to make your operations more ubiquitous.





Calendar update – where are we up to with schools & eLearning plans?



On behalf of the Ngā Pūmanawa e Waru Team, we would like to wish you all a very Merry Christmas and a Happy New Year. Be safe in your travels and enjoy your family time together.

Festive greetings to you all. Kia tau ai te manaakitanga ki runga i a koutou katoa.